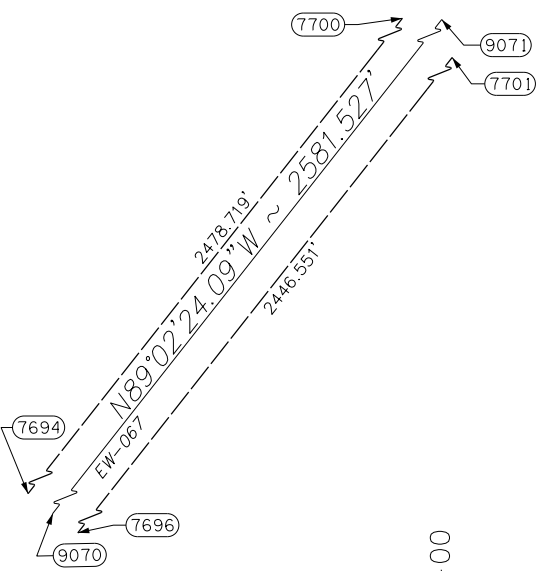
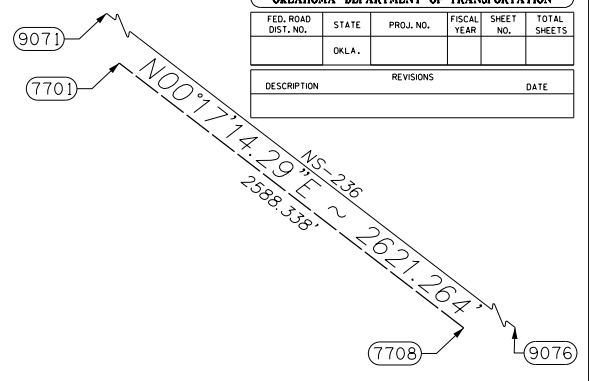


OKLAHOMA DEPARTMENT OF TRANSPORTATION					
FED. ROAD DIST. NO.	STATE	PROJ. NO.	FISCAL YEAR	SHEET NO.	TOTAL SHEETS
	OKLA.				
DESCRIPTION			REVISIONS	DATE	

N.E. 1/4 Sec. 16  
T-18-N, R-15-W

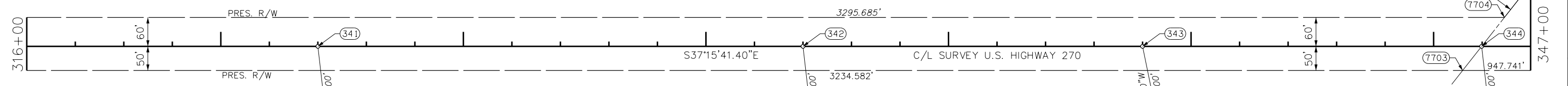


P.O.T. STA 322+00.000  
SET MAG NAIL W/  
LEMKE CONTROL WASHER

P.O.T. STA 332+00.000  
SET MAG NAIL W/  
LEMKE CONTROL WASHER

P.O.T. STA 339+00.000  
SET MAG NAIL W/  
LEMKE CONTROL WASHER

P.O.T. ON 1/4 SEC. LINE  
STA 345+98.969  
SET MAG NAIL W/  
LEMKE CONTROL WASHER  
2052.129' RT TO CENTER SEC.  
547.125' LT TO 1/4 COR.



ALL R.P.'S  
#4 REBAR  
FLUSH

ALL R.P.'S  
#4 REBAR  
FLUSH

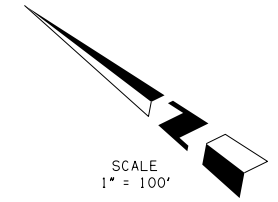
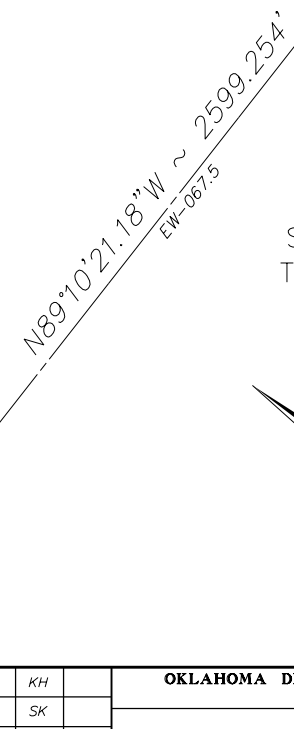
ALL R.P.'S  
#4 REBAR  
FLUSH

ALL R.P.'S  
#4 REBAR  
FLUSH

N.E. 1/4 Sec. 16  
T-18-N, R-15-W

S.E. 1/4 Sec. 16  
T-18-N, R-15-W

N.W. 1/4 Sec. 16  
T-18-N, R-15-W



OKLAHOMA DEPARTMENT OF TRANSPORTATION SURVEY DIVISION			
PLS	KH		
DRAWN	SK		
CHECKED	KH		
APPROVED	KH		
CREW	JH, SA, BH, DR	SWO 4600 (1)	PROJECT NO. 17671(34) SHEET NO. S21